

General Specifications

Electrical Capacity (Resistive Load)

Logic Level: 0.4VA maximum @ 28V AC/DC maximum
(Applicable Range 0.1mA ~ 0.1A @ 20mV ~ 28V)
Note: Find additional explanation of operating range in Supplement section.

Other Ratings

Contact Resistance: 50 milliohms maximum
Insulation Resistance: 500 megohms minimum @ 500V DC
Dielectric Strength: 500V AC minimum for 1 minute minimum
Mechanical Life: 50,000 operations minimum (momentary)
 25,000 operations minimum (alternate action)
Electrical Life: 50,000 operations minimum (momentary)
 25,000 operations minimum (alternate action)
Nominal Operating Force: 2.55N (momentary); 2.94N (alternate action)
Contact Timing: Nonshorting
Travel: Momentary: Pretravel .028" (0.7mm); Overtravel .016" (0.4mm); Total Travel .043" (1.1mm)
 Alternate: Pretravel .039" (1.0mm); Overtravel .039" (1.0mm); Total Travel .079" (2.0mm)

Materials & Finishes

Plunger: Polyacetal
Bushing: Carbon blended polyamide
Case Housing: Glass fiber reinforced polyamide
Support Bracket: Tin plated phosphor bronze
Movable Contact: Phosphor bronze with gold plating
Stationary Contacts: Copper alloy with gold plating
Terminals: Copper alloy with gold plating

Environmental Data

Operating Temp Range: -30°C through +85°C (-22°F through +185°F)
Humidity: 90 ~ 95% humidity for 96 hours @ 40°C (104°F)
Vibration: 10 ~ 55Hz with peak-to-peak amplitude of 1.5mm traversing the frequency range & returning in 1 minute; 3 right angled directions for 2 hours
Shock: 50G (490m/s²) acceleration (tested in 6 right angled directions, with 5 shocks in each direction)

Installation

Cap Installation Force: 49.03N (11.2 lbf) maximum downward force on actuator;
actuator must be in UP position to remove cap from alternate action models

PCB Processing

Soldering: Wave Soldering Recommended: See Profile A in Supplement section.
Manual Soldering: See Profile B in Supplement section.
Cleaning: Automated cleaning. See Cleaning specifications in Supplement section.

Standards & Certifications

Flammability Standards: UL94V-0 available
The BB Series pushbuttons have not been tested for UL recognition or CSA certification.
These switches are designed for use in a low-voltage, low-current, logic-level circuit.
When used as intended in a logic-level circuit, the results do not produce hazardous energy.

Distinctive Characteristics

Subminiature size (1/3 size of Series M switches) saves space on PC boards.

Specifically developed for logic-level applications.

Available in momentary and maintained circuits.

Industry's smallest alternate action (maintained) pushbutton with latchdown feature providing visible, audible, and tactile feedback.

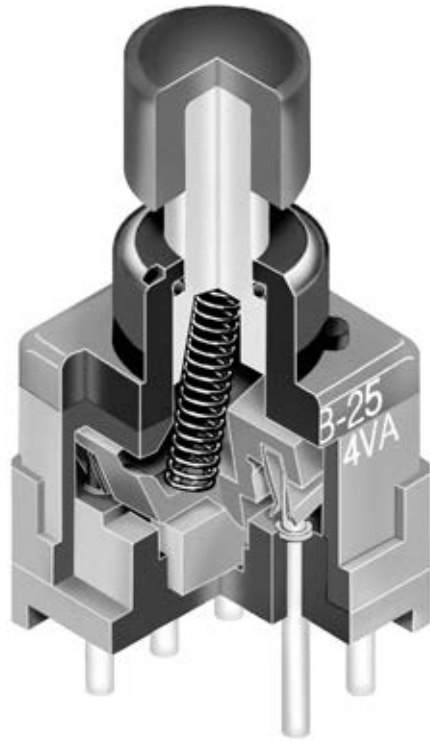
Antistatic superstructure, consisting of the carbon impregnated bushing and the support bracket, prevents static discharge to the contacts. Static electricity from an operator's touch travels from the actuator through the bushing and bracket to the PC board.

Award-winning STC contact mechanism with benefits unavailable in conventional mechanisms: smoother, positive detent actuation, increased contact stability and unparalleled logic-level reliability. (Additional STC details in Terms & Acronyms; see Supplement section.)

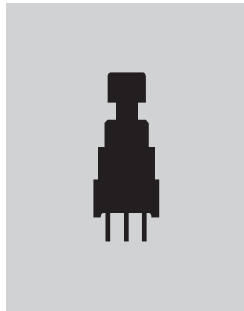
Smooth, 6mm diameter bushing simplifies panel layout.

Totally sealed body construction prevents contact contamination and allows time- and money-saving soldering and cleaning.

.100" x .100" (2.54mm x 2.54mm) terminal spacing conforms to standard PC board grids.

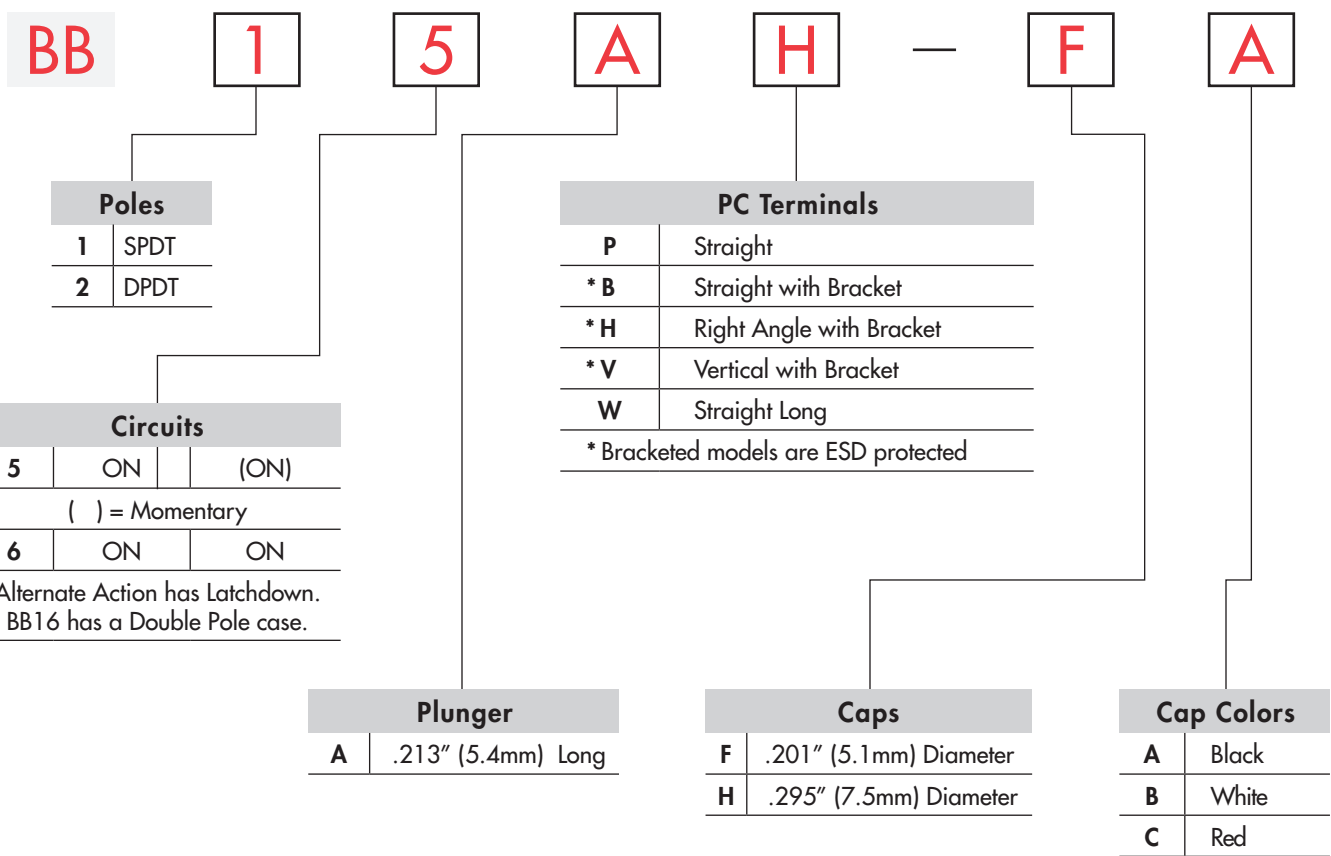


Actual Size



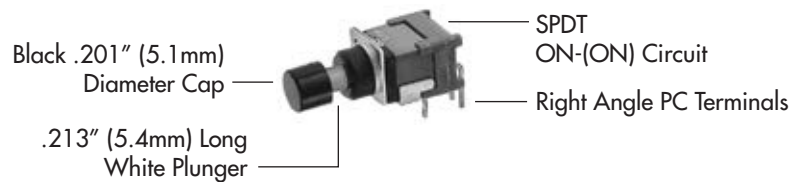
- Toggles
- Rockers
- Pushbuttons**
- Illuminated PB
- Programmable
- Keylocks
- Rotaries
- Slides
- Tactiles
- Tilt
- Touch
- Indicators
- Accessories
- Supplement

TYPICAL SWITCH ORDERING EXAMPLE



DESCRIPTION FOR TYPICAL ORDERING EXAMPLE

BB15AH-FA



Toggles
 Rockers
 Pushbuttons
 Illuminated PB
 Programmable
 Keylocks
 Rotaries
 Slides
 Tactiles
 Tilt
 Touch
 Indicators
 Accessories
 Supplement

POLES & CIRCUITS

Pole	Model	Plunger Position () = Momentary		Connected Terminals		Throw & Schematics
		Normal	Down	Normal	Down	
SP	BB15 BB16	ON ON	(ON) ON	2-3	2-1	SPDT
DP	BB25 BB26	ON ON	(ON) ON	2-3 5-6	2-1 5-4	DPDT

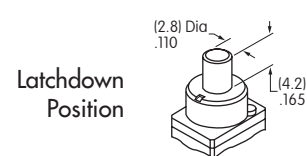
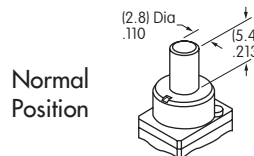
Note: Terminal numbers are not actually on the switch.

PLUNGERS

A .213" (5.4mm) Long

Standard Plunger Color: White

Contact factory for other colors and lengths.

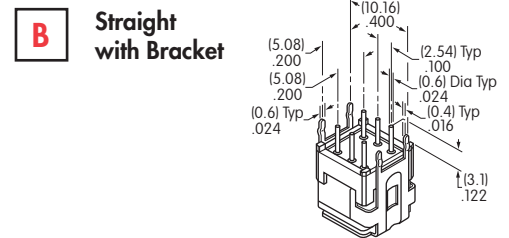
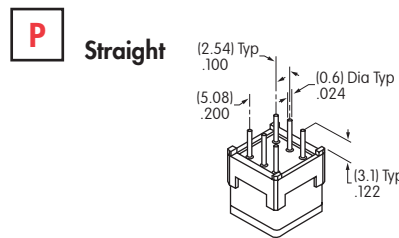


PC TERMINALS

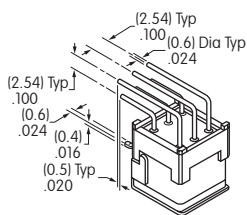
Use of a support bracket is recommended to increase PCB mounting strength and stability.

Both single pole and double pole alternate action models have double pole bases.

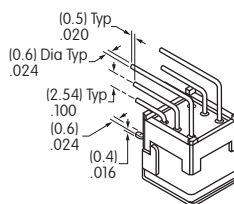
See Typical Switch Dimensions for details.



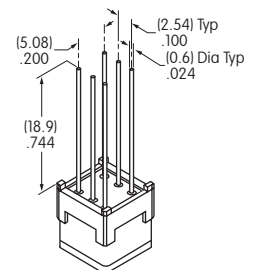
H Right Angle with Bracket



V Vertical with Bracket



W Straight Long

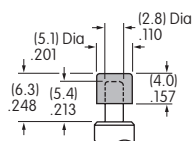


SLIP-ON CAPS

F AT475
.201" (5.1mm) Diameter Cap



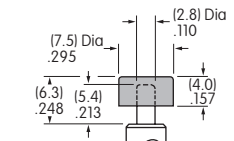
Material: Polyamide



H AT496
.295" (7.5mm) Diameter Cap



Material: Polyamide



Colors Available:

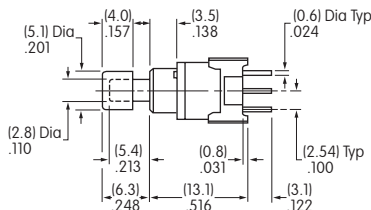
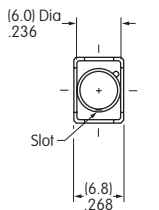
A Black

B White

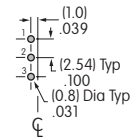
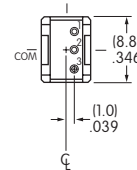
C Red

TYPICAL SWITCH DIMENSIONS

Straight PC



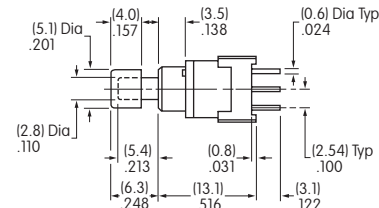
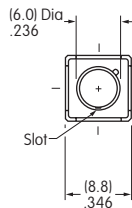
Single Pole



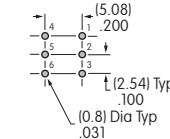
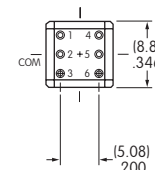
BB15AP-FA

Momentary

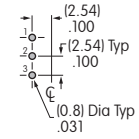
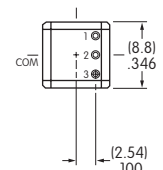
Straight PC



Double Pole



BB16AP

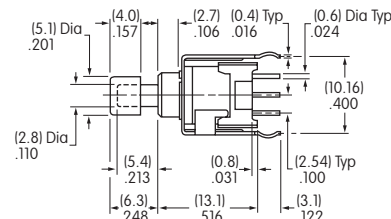
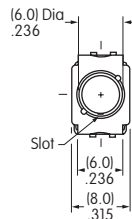


BB25AP-FA

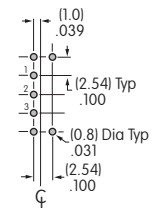
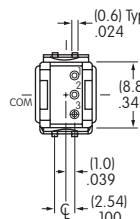
Momentary & Alternate

Alternate

Straight PC • Bracket



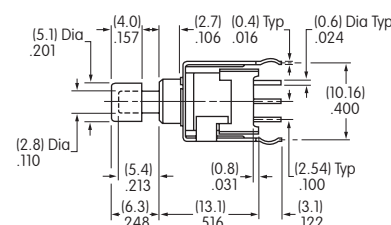
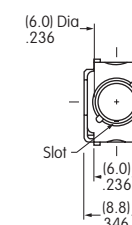
Single Pole



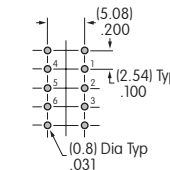
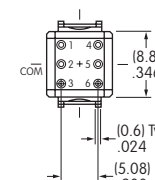
BB15AB-FA

Momentary

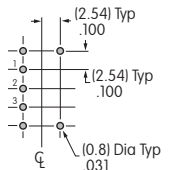
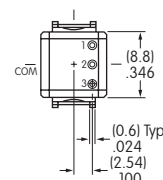
Straight PC • Bracket



Double Pole



BB16AB



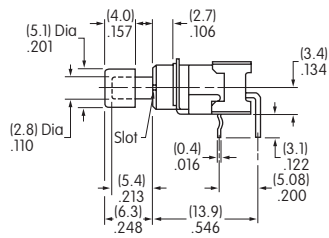
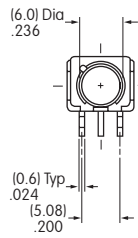
BB25AB-FA

Momentary & Alternate

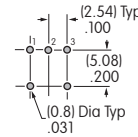
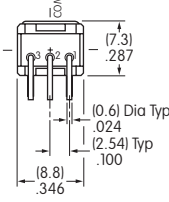
Alternate

Toggles
Rockers
Pushbuttons
Illuminated PB
Programmable
Keylocks
Rotaries
Slides
Tactiles
Tilt
Touch
Indicators
Accessories
Supplement

TYPICAL SWITCH DIMENSIONS



Single Pole

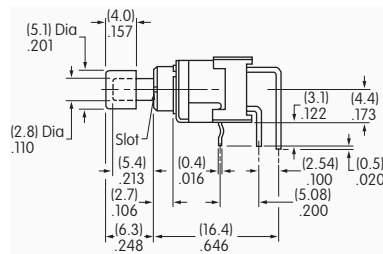
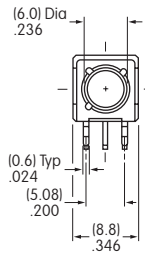


Momentary

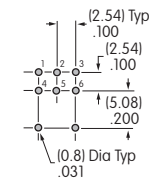
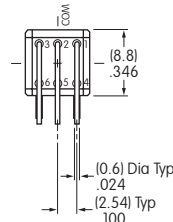
Right Angle PC



BB15AH-FA

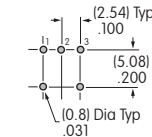
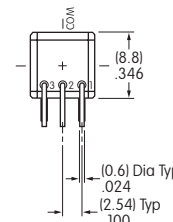


Double Pole



Momentary & Alternate

BB16AH

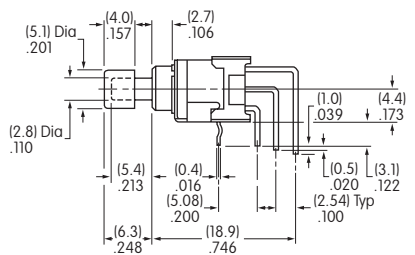
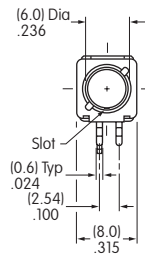


Alternate

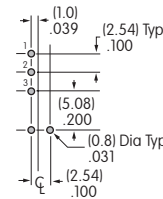
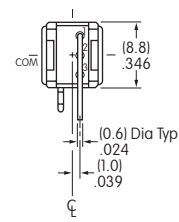
Right Angle PC



BB25AH-FA



Single Pole

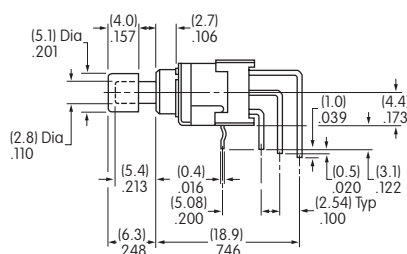
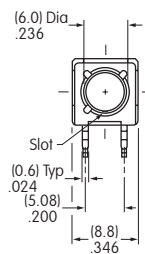


Momentary

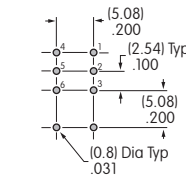
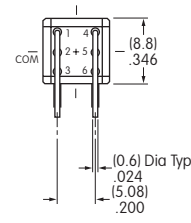
Vertical PC



BB15AV-FA

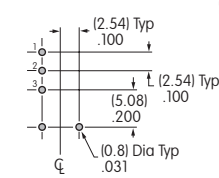
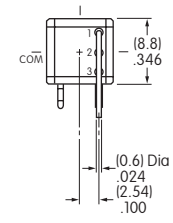


Double Pole



Momentary & Alternate

BB16AV



Alternate

Vertical PC



BB25AV-FA

Mouser Electronics

Authorized Distributor

Click to View Pricing, Inventory, Delivery & Lifecycle Information:

[NKK Switches:](#)

[BB15AW-FC](#) [BB25AP-HB](#) [BB15AH-FC](#) [BB15AH-HC](#) [BB15AP](#) [BB16AP](#) [BB15AP-FA](#) [BB15AP-FB](#) [BB25AW](#)
[BB26AW](#) [BB25AP-FA](#) [BB16AP-FA](#) [BB26AP-FA](#) [BB25AH-FA](#) [BB25AW-FA](#) [BB16AW-FA](#) [BB15AP-HA](#) [BB16AP-HA](#)
[BB26AP-HA](#) [BB25AH-HA](#) [BB26AH-HA](#) [BB15AV-HA](#) [BB25AV-HA](#) [BB26AV-HA](#) [BB26AW-HA](#) [BB16AP-FB](#)
[BB26AP-FB](#) [BB16AB-FB](#) [BB16AH-FB](#) [BB15AP-HB](#) [BB16AP-HB](#) [BB26AB-HB](#) [BB15AP-FC](#) [BB25AP-FC](#) [BB16AP-](#)
[FC](#) [BB26AP-FC](#) [BB26AB-FC](#) [BB25AP-HC](#) [BB16AP-HC](#) [BB26AP-HC](#) [BB15AB-HC](#) [BB25AB-HC](#) [BB26AB-HC](#)
[BB15AV-HC](#) [BB25AW-HC](#) [BB15AV1-FA](#) [BB15AW](#) [BB16AH](#) [BB16AW](#) [BB25AP](#) [BB26AP](#) [BB25AP-HA](#) [BB15AW-](#)
[HC](#) [BB25AV-FB](#) [BB26AV-FA](#) [BB15AB1](#) [BB16AB1](#) [BB16AV-HA](#) [BB16AV-HC](#) [BB15AB-HB](#) [BB15AB-FB](#)
[BB15AH/328](#) [BB16AB-FA](#) [BB15AP-HC](#) [BB26AV](#) [BB25AP-FB](#) [BB16AV-HB](#) [BB16AB-FC](#) [BB26AV-FC](#) [BB16AV1-HA](#)
[BB15AB](#) [BB16AV](#) [BB16AB](#) [BB25AH-FB](#) [BB16AB-HC](#) [BB16AB-HA](#) [BB16AB-HB](#) [BB25AB](#) [BB26AH-HC](#)
[BB16AP/328](#) [BB26AV-HB](#) [BB26AH-FA](#) [BB15AH-HB](#) [BB26AB-FA](#) [BB16AV-FA](#) [BB25AV-FC](#) [BB16AH-FC](#) [BB15AH-](#)
[FB](#) [BB15AB-FC](#) [BB15AV](#) [BB16AH-HB](#) [BB15AB/328](#) [BB25AB-HA](#) [BB16AH-HA](#) [BB15AH-FA](#) [BB25AH-FC](#) [BB26AB-](#)
[HA](#) [BB26AH-FC](#) [BB16AH-HC](#) [BB15AV-FC](#)